

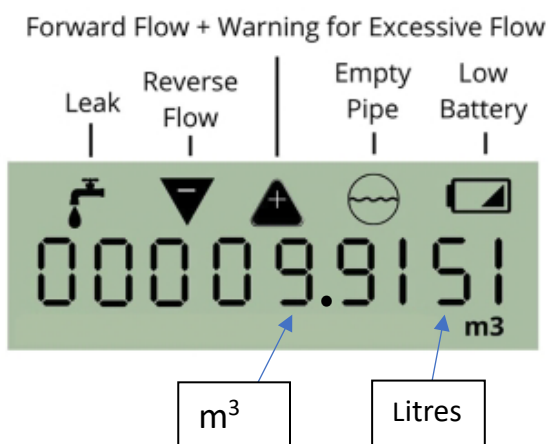
Neptune® MACH 10® Ultrasonic Water Meter



Version 1








Version 2



WHAT DOES IT MEAN?

*When there is no flow, the flow direction may be alternating between +/- symbols.

Symbol	Description	Status	Meaning	Interpretation
	Water leak	Off Flashing Continuously On	Less than 50 intervals of 15 mins of flow 50-95 intervals of 15 mins of flow More than 95 intervals of 15 mins of flow	Less than 12 hrs of continuous flow in a 24 hr. period. Approx. 12 hrs continuous flow in a 24 hr. period Continuous flow for a 24 hr. period.
	Flow direction	Off + On - On	No Flow* Forward flow detected Reverse flow detected	+ : Forward Flow - : Reverse Flow
	Excessive Flow	Off On	Normal flow Higher than normal flow	Potential major leak
	Empty Pipe	Off On	Meter is operating normally No signal received for more than 1 minute	No water in meter (or possible burst)
	Battery status	Off Continuously On Continuously Flashing	Normal state Possible low battery Low battery	<ul style="list-style-type: none"> • More than 1 year of battery life • Less than 1 year of battery life • Low battery

What you see when you open the lid (in order):

1. Total consumption in cubic meters (m³)
2. *Internal information*
3. *Internal information*
4. Version 2 will display the temperature (°C).
5. The display will switch between the flow rate (L/min) and total consumption (m³) every 6 seconds.

Typical Usage:

Use	Average Volume (Litres)
Toilet Flush	4L - 13L
Shower (5 min)	60L
Bathtub	140L
Dishwasher	25L – 60L
Clothes Washer	100L-150L

Use	Flow
Leaking faucet	0.070 – 0.115m ³ /day, (0.05-0.08 L/min)
Running toilet	15m ³ /day, 625 L/hr
Bathroom faucet	7.5 L/min

1 Litre = 4,000 drips

Rates:

Service	2024 Rate
Water (5/8" or 3/4" meter)	\$2.40/m ³ 0.99/day
Wastewater (5/8" or 3/4" meter) *Residential: 82% of water consumption	\$2.12/m ³ 0.76/day
Drainage (typical)	\$0.67/day
Waste	\$0.53 for 240L \$0.78 for 360L

Conversions:

1m³ = 1,000Litres

1m³ = 264 US gal

1m³ = 220 Imperial gal